



Eagle Tugs Service Bulletin

ESB-01-09

Date: October 26, 2009

Affected Models: All TT-4 thru TT-8 Tow Tractors

Subject: Dana 44 Spindle Nuts

Background:

It has come to the attention of Eagle Tugs that there have been sporadic occasions of spindle nuts (part number# 500381-3) loosening on Dana 44 front axles. This may affect the performance of your Eagle TT-4, TT-5, TT-6 or TT-8 tow tractor.

Eagle has performed its own review of the Dana 44 axles that it has in inventory to try to find the root cause of the problem. Due to the sporadic nature of the problem, Eagle has informed Dana to review their production process for inconsistencies.

Action:

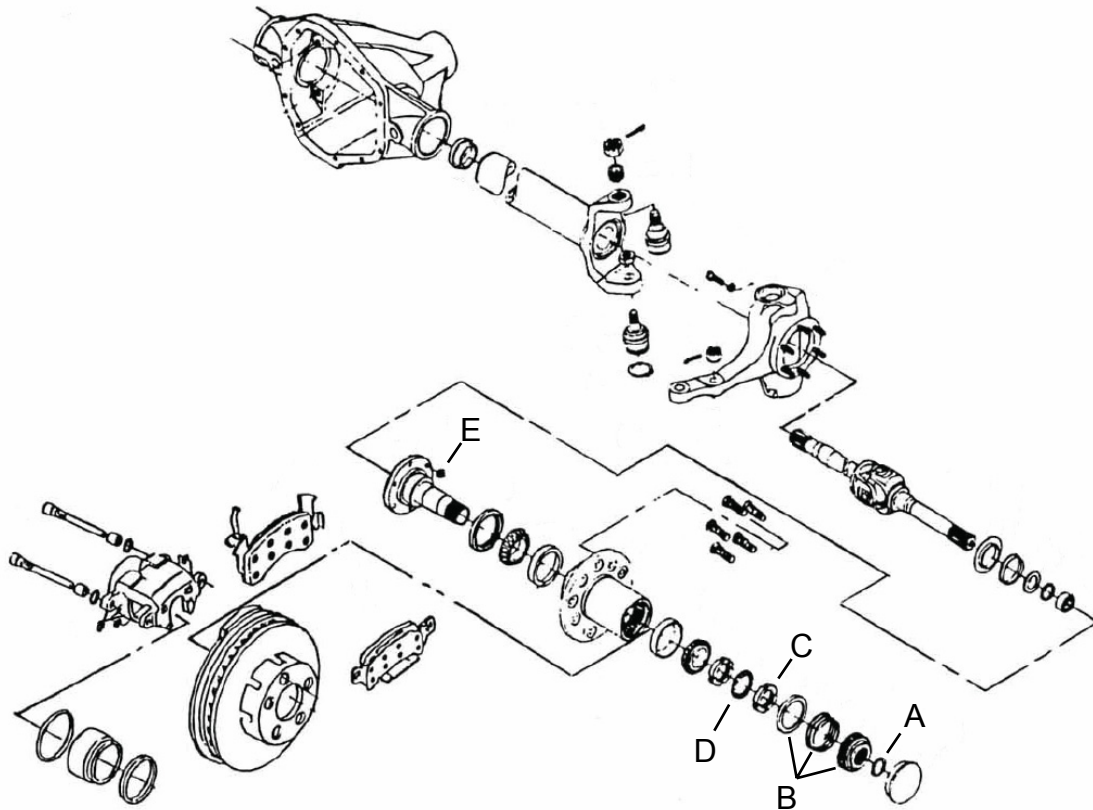
To help prevent this failure from occurring, please refer to the Eagle Tugs TT4-8 Parts & Service Manual for the proper PM schedule which includes the procedure to check and re-torque the axle spindle nuts as needed. That procedure has been included in this document for your convenience. Failure to check and maintain the proper torque on the spindle nuts could result in damage to the front axle due to the spindle nuts loosening. Please be aware of any loud grinding noises that could suggest that the spindle nuts are separating from the axle and contact Eagle Tugs Customer Service department for further instructions.

Note: Eagle Tugs has performed the necessary check and proper re-torque on affected tractors manufactured after the date of this bulletin. If your tractor was manufactured after the date of this bulletin, no special action is required.

Backing Plate Replacement Procedure:

Please refer to the steps below and the included image for proper adjustment procedure and part reference.

ESB-01-09



Disassembly procedure for access to axle spindle spindle nuts (E):

- Step 1: Lift the tug so that both of the front tires are off the ground and make sure the unit is secured properly.
- Step 2: Remove both front wheels.
- Step 3: Remove both front calipers leaving the brake hose intact.
- Step 4: Remove both of the hub center caps.
- Step 5: Use lock ring pliers to remove both lock rings on the left and right side of the tug. (A)
- Step 6: Remove the gear, spring, and spring retainer on both sides. (B)
- Step 7: Use socket #OTC 7157 to remove the locking nut. (C)
- Step 8: Remove the locking ring. (D)
- Step 9: Remove the spindle nut.
- Step 10: Slide the rotor & hub assembly off the spindle leaving the bearings inside the hub.



Eagle Tugs Service Bulletin

ESB-01-09

Verify and re-tighten the 6X 3/8-24 stover lock nuts to 40ft lbs. (E)

Reassembly Procedure:

- Step 1: Install the rotor & hub assembly making sure the bearing does not fall out.**
- Step 2: Install the spindle nut with the dowel facing toward you. Tighten to 35 ft-lbs to seat the bearings while spinning the rotor.**
- Step 3: Loosen the spindle nut and re-snug (do not over-tighten).**
- Step 4: Install the lock ring making sure the hole in the ring lines up with the dowel on the nut. If it does not, rotate the nut so the dowel is aligned.**
- Step 5: Install the lock nut and torque to 50 ft-lbs.**
- Step 6: Install the spring seat with the flat part facing toward you.**
- Step 7: Install the spring, the gear and the C-clip.**
- Step 8: Apply a small amount of RTV sealant to the cap and install.**
- Step 9: Install the caliper.**
- Step 10: Install the tires and lug nuts and torque the lug nuts to 90 ft-lbs.**

We truly strive for your Eagle experience to be the best that it can be. If you have any questions or concerns please contact us at 800-671-0431 (+1 734-442-1000) or email us at customerservice@eagletugs.com.

Thank you for your time and thank you for choosing Eagle Tugs.