

Mental Health

We listen.
We care.
We help.

Daily life is filled with stress. Dealing with job, family, or other personal circumstances can often be overwhelming. Fortunately, you don't have to go through it all alone. At Oaklawn, we provide a full spectrum of care to help you or a loved one work through the pain and anguish that can come from the stress of daily life.



OaklawnHospital

Oaklawn Psychiatric Center
200 North Madison
Marshall, MI 49068
(269) 781-4484

Oaklawn Psychological Services
15209 West Michigan Avenue
Marshall, MI 49068
(269) 781-9119

Psychiatric Partial Hospitalization
15209 West Michigan Avenue
Marshall, MI 49068
(269) 781-7850



OaklawnHospital

ADVANCING MEDICINE
COMPASSIONATE CARE

Mental Health



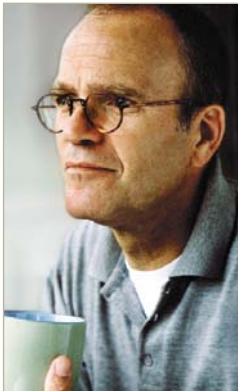
“At Oaklawn we are continually committed to your overall well-being.”



Finding hope in a peaceful environment.

Oaklawn provides a continuum of mental health care, including both outpatient and inpatient services. Oaklawn Psychological Services (OPS) provides outpatient counseling services at our beautiful Bear Creek Campus, 15209 West Michigan Avenue. In a serene, wooded setting, the OPS staff counsels adults, children and teens individually, in families, as couples and in groups. We provide a wide variety of treatments, including testing, hypnosis, biofeedback, didactic therapy, cognitive-behavioral therapy, and psychiatry. Our clinical staff helps patients deal with a wide variety of issues including:

- * Adolescent disorders
- * Attention Deficit Disorder/Hyperactivity
- * Depression/Stress
- * Eating Disorders
- * Marital/Family Discord
- * Men's Issues
- * Panic/Anxiety disorders
- * Phobias
- * Women's Issues



impaired. The program is offered at Oaklawn's Bear Creek Campus, where patients attend the program Monday through Friday and return home in the evening. The program assists patients in overcoming disturbing moods and thoughts and typically lasts from 5-15 days. Individual treatment planning is facilitated by a team of licensed professionals from the fields of psychiatry, psychology, social work, nursing, and activity therapy.



Overcoming life's big hurdles.

Sometimes outpatient or partial hospitalization services are not enough to fully address an issue. The Oaklawn Psychiatric Center inpatient unit is a 17-bed adult care facility for those experiencing severely disruptive changes in their thoughts, feelings or behaviors. Here a multi-disciplinary team of social workers, activity therapists, psychiatric nurses, and psychiatrists work together to address a wide variety of psychiatric and psychological issues.

Individual and group therapy is offered seven days a week and focuses on medication knowledge and compliance, problem solving, self esteem, stress management, and other individualized therapeutic interventions. Families are encouraged to participate when it's appropriate to do so. Admission to the Psychiatric Center is by referral from physician, therapist, family, friend or self-referral.

We're always here for you.

At Oaklawn Hospital, we are continually committed to your overall well-being. In addition to the services detailed above, we also provide several support groups to help you or a loved one deal with a variety of issues. You can also take comfort in the fact that all members of Oaklawn Hospital's psychiatric and psychological services staff are licensed by the State of Michigan.

If you would like more information on any of the psychiatric or psychological services offered through Oaklawn Hospital, please call.

Oaklawn Psychological Services
(269) 781-9119

Psychiatric Partial Hospitalization
(269) 781-7850

Oaklawn Psychiatric Center
(269) 781-4484

Daily treatment that works.

When outpatient therapy isn't enough, Oaklawn offers a structured, daily treatment program. The Psychiatric Partial Hospitalization Program provides help for those suffering to a point that their daily living is severely

