



**THE NATIONAL INSTITUTE
FOR TRAUMA AND LOSS
IN CHILDREN**



**Trauma Training & Certification
February 24, 25 & 26, 2012
San Antonio, Texas**

*“If you don’t think what I think...
feel what I feel... experience what I
experience... see what I see when I
look at myself, others, and the
world around me... how can you
possibly know what’s best for me?”*

It is this consistent message from traumatized children that frames the focus of TLC’s published evidence-based intervention programs.

Join us in San Antonio for Level-1, 2 or 3 Trauma Certification!

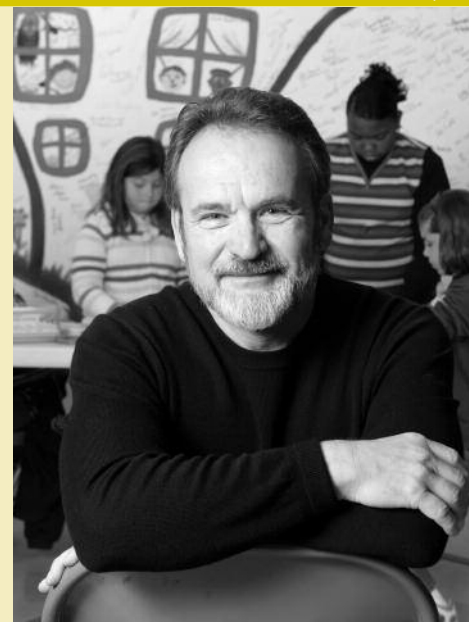


NEW THIS YEAR! Trauma-Informed Assessment Specialist Certification.

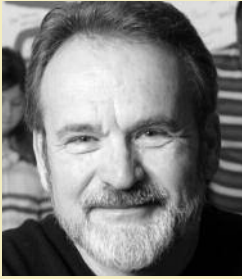
TLC, in collaboration with the Child Trauma Assessment Center (CTAC) at Western Michigan University, is proud to introduce this new Level-1 Certification. With over 2,000 completed trauma-informed assessments, CTAC, a member of the National Child Trauma Stress Network, has a great deal of experience to offer. Trauma’s impact on language, social communication, sensory processing, cognitive and behavioral functioning dictate that intervention strategies and treatment plans be driven and guided by trauma-informed assessment. If we do not understand how children are actually processing their daily interactions, which observation alone does not reveal, how can we apply the most developmentally appropriate interventions? We cannot. Participants will walk away with defined competencies in the use of several assessment tools (see course descriptions inside). This is all new content and different from TLC’s current *Assessment Driven Intervention* online course.

We are also offering *After the School Crisis* training again this year due to popular demand. Not only does this course address critical recovery protocol but it provides the tools needed to minimize the impact traumatic incidents can have on students and staff.

For your convenience we will begin on Friday morning and end on Sunday afternoon at 12:30 for an early departure. For information about TLC’s history, programs, resources, certification and more go to www.starrtraining.org/tlc.



TLC Founder William Steele, PsyD, MSW



William Steele

Dr. William Steele, PsyD, MSW was awarded a Michigan Emmy for Preventing Teen Suicide in the early 1980's when he assisted schools nationally with developing school crisis teams in response to the epidemic of suicide among young people. In the late 1980's when violence emerged as the epidemic killing our young people, he was one of the first to assist schools in developing violence prevention/safety protocols. In 1990, he founded TLC. He has trained over 60,000 professionals and personally certified the current 6,000 TLC Certified Trauma Specialists using the many evidence-based, school and community intervention programs he developed. He has assisted survivors following the bombing of the Federal building in Oklahoma, 9/11, Edgewood Baptist shooting in Texas, Hurricanes Katrina/Rita, Parkersburg, Iowa killing of a beloved school coach and many other media-covered tragedies but also the day to day traumas that do not receive national media attention.

Author of numerous articles, books and programs, he is most proud of the 20,000 TLC members who over the years have volunteered their time to assist in the development, field testing and research of TLC's evidence-based school and community-based intervention programs and resources.

Jim Henry, PhD is the co-founder and project director of the Child Trauma Assessment Center (CTAC) and co-developer of CTAC's comprehensive neurodevelopmental trauma assessment protocol. He has received the 2003 Michigan Child Advocate of the Year, (Ray Helfer Award), Michigan Professional Society on the Abuse of Children (MiPSAC), 1991 Child Advocate of the Year, and the 1990 Exemplary Child Welfare Worker of the Year. He is the principal investigator in two SAMHSA National Child Traumatic Stress Initiative grants and the principal investigator in two federal SAFE START Initiatives for children exposed to violence. He has served on several national committees of the National Child Traumatic Stress Network and is currently co-chair of the NCTSN Child Welfare Committee. He has been instrumental in the development of trauma-informed curricula for child welfare workers and resource parents. He is a coauthor of a book, *Seeking Justice*, which explores best models of system intervention in child sexual abuse. He has trained over 25,000 professionals and is a professor at Western Michigan University's (WMU) School of Social Work. A Practitioner at heart, he served as child protective services worker and supervisor for 17 years, prior to his WMU appointment in 1997.



Jim Henry

Mark Sloane, DO has been a board-certified practicing pediatrician for more than 29 years. He has been interested in behavioral/developmental pediatrics for 27 years, and is now considered an expert in the diagnosis and treatment of pediatric disorders of mood, behavior, learning, and attention. He has evaluated and treated more than 9,000 children with these disorders, and in 2003 opened a speciality practice, The Center for Behavioral Pediatrics, limited to neurobehavioral/neurodevelopmental pediatrics. Dr. Sloane co-authored numerous publications involving topics such as Neurobiology and Neurodevelopmental Impact of Childhood Traumatic Stress and Prenatal Alcohol Exposure. In addition, he has been extensively involved in teaching and has given over 700 presentations across the country on these subjects. He is a founding member of the trans-disciplinary team at SW Michigan Children's Trauma Assessment Center (CTAC) at Western Michigan University and he provides consultation regarding the treatment and medication management of children and adolescents exposed to traumatic stress and/or prenatal drugs and alcohol.



Mark Sloane



Glenn Carlton

Glenn R. Carlton, PhD, CTC received best practice awards from the Ohio School Psychologists Association and School Psychologists of Central Ohio. Over the past 20 years, he has been intimately involved with the design, implementation and evaluation of *Traumatic Event Crisis Intervention Plan (TECIP)*. He maintains certification through TLC and the International Critical Incident Stress Foundation and also serves on the Site Steering Committee of The Compassionate Friends, Inc., Columbus Chapter and facilitates monthly parent and sibling support meetings.

Jennifer Haddow, MS, Ed, CTS co-chairs South-Western City Schools district wide Crisis Response Team (Flight Team) and is a quarterly guest presenter at the Ohio State University's School of Education, discussing best practices. Jennifer works with schools on ways to improve the overall school climate and continues to work with emotionally and behaviorally challenged students. She earned her Masters in Educational Leadership from the University of Dayton.



Jennifer Haddow



Mike Markowitz

Michael R. Markowitz, MS, Ed, CTS has been a school psychologist for 13 years and the co-developer of the framework, *After the Crisis: Traumatic Event Crisis Intervention Plan (TECIP)* and has been the coordinator of South-Western City Schools district wide Crisis Response Team (Flight Team) since 2002. He received the School Psychologist of the Year Award in 2006. Mike is licensed through the Ohio Board of Education as a School Psychologist and is an accredited member and certified trainer with the TLC Institute.

Glenn, Jennifer and Mike are co-founders of Crisis Oriented Planning and Educational Services (COPES) and shared the honor of being named TLC's "School Specialists of the Year" in 2009.

Course Descriptions and Schedule

Children of Trauma

PREREQUISITE FOR ALL CERTIFICATION LEVELS

(6-hour online course) We highly recommend completing this online course prior to attending Structured Sensory Interventions.

Presenter: William Steele

This online course is a recorded live presentation that “sets the foundation” for the use of the intervention strategies participants will practice in San Antonio. Learn how to become a “witness” to how grieving or traumatized children now experience life, how they now see themselves, others and the world around them as a result of all they have been exposed to. This helps us, as practitioners, appreciate the intensity of their experiences, their neurological impairment and their intervention needs in school, at home or in clinical settings. Segments demonstrating the intervention process will prepare participants for the February 24th full-day of practice. **Although it is not mandatory to complete this online course before attending the Structured Sensory Interventions course, we do highly recommend it. Even if you are not applying for Certification the evidence-based strategies practiced will simply make more sense and the experience more valuable within the context of the foundation presented in the Children of Trauma online course. CEs available: 6**

Structured Sensory Interventions

REQUIRED ALL LEVELS (1-day) Prerequisite: *Children of Trauma*

Friday, February 24, 8:30 am–4:00 pm

Presenter: William Steele

This is a practice day. Participants will be engaged in the evidence-based, grief and trauma psycho-educational intervention processes used in schools and community settings across the country. Cases - including the mother of a 7-year-old who died of cancer at home; a 12-year-old exposed to repeated domestic violence; a 15-year-old, raped multiple times at a drug house; and a spouse whose husband was tortured and killed - will be presented along with the remarkable evidence-based reduction of their PTSD and other mental health and cognitive related reactions. Participants in schools or agency settings will feel comfortable using any of TLC’s structured manualized psycho-educational trauma intervention programs and tools at the end of this practice-directed training. For your convenience, we will send you a link to the handout one week before the training. Please print and bring it with you, as we will not provide hard copies. **CEs available: 6**

Trauma-Informed Assessment

CLINICAL LEVEL-1 and LEVELS-2 & 3 (2-days)

Saturday, February 25, 8:30 am–3:00 pm and Sunday, 8:15 am–12:30 pm

Presenters: Jim Henry and Mark Sloane

Upon completion of this two-day training participants will be able to: 1) administer and interpret the Ethnographic Interview (EI) which incorporates a culturally sensitive approach to developing a case history, 2) administer and interpret findings from the SW Michigan Child Trauma Screening Protocol and Kaufman Brief Intelligence Test (K-BIT) which includes a comprehensive screening of language and social communication, sensory processing, cognitive and psychosocial functioning, and 3) integrate brain behavior concepts and the EI, K-BIT and Child Trauma Screening Protocol outcomes into treatment recommendations. For your convenience, we will send you a link to the handout one week before the training. Please print and bring it with you, as we will not provide hard copies. **CEs available: 12**

After the School Crisis

REQUIRED SCHOOL LEVEL-1 (2-days)

Saturday, February 25, 8:30 am–3 pm and 4 pm–6 pm and Sunday, February 26, 8:15 am–12:30 pm

Presenters: Glenn Carlton, Jennifer Haddow and Michael Markowitz

In this two-day session participants will be introduced to the *Traumatic Event Crisis Intervention Plan (TECIP)* that provides the tools necessary to initiate protocols that offer crisis team members a proven structure to stabilize all involved in recovering from the crisis, mobilize resources, accelerate normalization of routine, and minimize the adverse impact on students and staff by restoring adaptive functioning. The *Rapid Assessment Guide Traumatic Event Briefing Process*, *TECIP*, *4x5 Development Flow Chart*, the *what, when, where, who* and *how* to initiate and navigate through the *Roadmap to Recovery* will be presented. Lecture, demonstrations, small and large group discussion, and practice make this a “must attend” for school crisis response members. The *TECIP Abbreviated Implementation Guide* will be given to every attendee. For your convenience, we will send you a link to the handout one week before the training. Please print and bring it with you, as we will not provide hard copies. **CEs available: 12**



TLC Certification

Start working on your TLC Certification at the San Antonio training and become part of the respected network of TLC helping professionals who practice trauma-informed care and interventions. By attending all 3 days of this training and completing the required online courses and exam you will earn your certification. We recommend that you take the TLC online course, *Children of Trauma*, prior to the San Antonio training for the reasons stated in the course description.

It's easy to take a TLC online course! Once you select and pay for your course we will email you a link, a user name and password as soon as possible. Some courses include a book in pdf format, which you can download. All online courses are self-paced and we allow up to 6 months for completion.

After completing Level-1 Certification you may use the credentials CTS, which stands for Certified Trauma Specialist. After completing Level-2 Certification you may use the credentials CTC, which stands for Certified Trauma Consultant. After completing Level-3 Certification you may use the credentials CTC-S, which stands for Certified Trauma Consultant Supervisor.

Continuing Education Credits

Continuing Education credits are available for \$25/day, \$50/2-days or \$60/3-days. Each full-day of attendance provides approximately 5.5 to 6 CE units from the listed providers. Graduate credits are also available through San Diego University and Grand Valley State University. CEs available include:

- National Board for Certified Counselors (NBCC)
- American Psychological Association (APA)
- The Assoc. for Play Therapy (APT approved provider 01-108)*
- Canadian Association for Certified Play Therapists
- National Assoc. of Social Workers (NASW)
- California Board of Behavioral Sciences
- Florida Board of Clinical Social Work, Marriage & Family Therapy & Mental Health Counseling
- Illinois Department of Professional Regulation for Social Workers
- Illinois Department of Professional Regulation for Marriage and Family Therapy
- Illinois Department of Professional Regulation for Counselor/ Clinical Counselor
- State of Ohio Counselor and Social Worker Board
- Texas Education Agency (CPE#500776)
- Texas State Board of Social Worker Examiners
- Texas State Board of Examiners of Professional Counselors
- Michigan State Board of Continuing Education (SB-CEU)
- Michigan Certification Board for Addiction Professional
- Michigan Social Work Continuing Education Collaborative

TLC Online Courses Available:

- Adolescent Grief
- Art, Play, Music, Drama & Bibliotherapy
- Assessment Driven Intervention
- Bullying and Cyberbullying
- Children of Trauma
- Clear Vision 1
- Confronting Death in the School Family
- Domestic Violence
- Eating Disorders
- Ethics of Art and Play Therapy
- Psychophysiology of Trauma
- Reaching & Teaching Stressed Students
- Resilience and Posttraumatic Growth
- Suicide Intervention
- Trauma Debriefing
- Trauma-Informed Schools
- Unique Needs of Children of Color
- Working Through an Ethical Lens
- Zero to Three Trauma Interventions

Online Courses Available Soon:

- Clear Vision 2
- Fight to Flight: Working with Refugees
- Kids & Families in the Juvenile System
- Trauma in the Substance Abuse World
- Using *SITCAP*® with Homeless Children
- Working with At-Risk Youth
- And MORE!

Go to www.starrtraining.org/online-courses for course and instructor information.

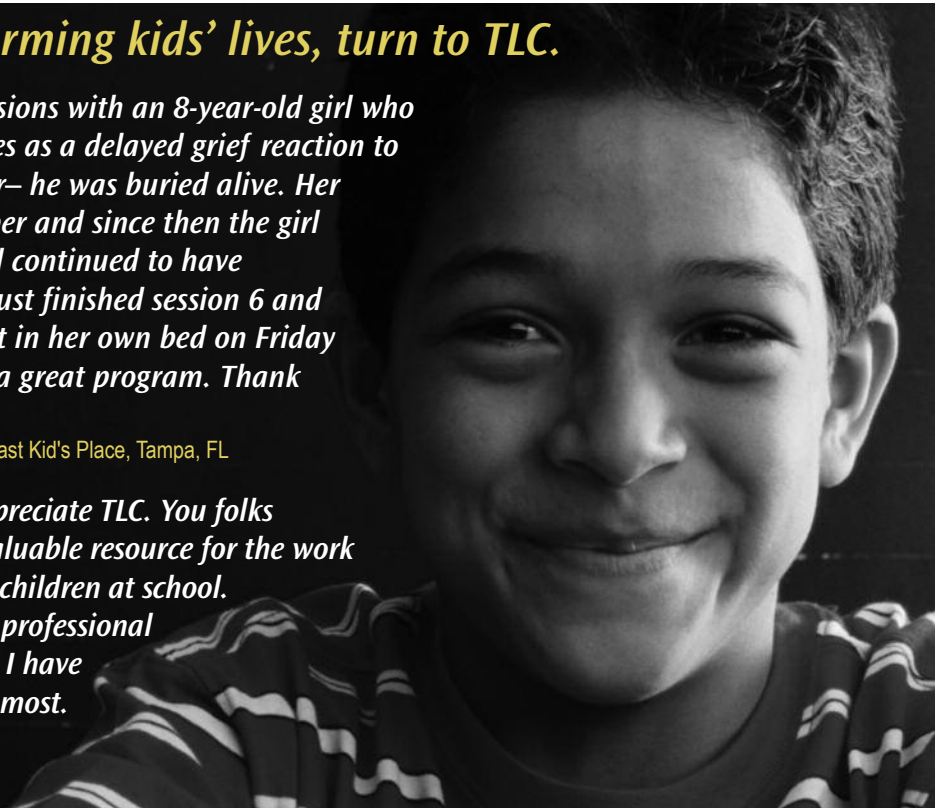
When it comes to transforming kids' lives, turn to TLC.

"I just finished my first SITCAP® sessions with an 8-year-old girl who was experiencing horrific nightmares as a delayed grief reaction to when her grandfather died last year— he was buried alive. Her mother was hospitalized in December and since then the girl would not sleep in her own bed and continued to have nightmares and panic attacks. We just finished session 6 and I heard from the Mom that she slept in her own bed on Friday for the first time in months. This is a great program. Thank you so much!"

Cheryl Jackson, MSW, CT, Program Director, Suncoast Kid's Place, Tampa, FL

"I want you to know how much I appreciate TLC. You folks remain the best trainers and most valuable resource for the work I do in my private practice and with children at school. Out of all my university courses and professional development efforts, the conferences I have attended by TLC have taught me the most. Thank you so very much!"

Libby Christianson, Private Practice, Nappanee, IN





How to Register

Put a check in the box by the courses you would like to attend. **You do not need to be working toward Certification to attend courses.** Each Certification requires attendance at 5 days of onsite or online courses plus an online exam. For more information about the TLC Certification program and requirements visit www.starrtraining.org/certification.

NEW! TRAUMA-INFORMED ASSESSMENT SPECIALIST*

- Children of Trauma** (online prerequisite for Certification)
- Structured Sensory Interventions** (Friday)
- Trauma-Informed Assessment** (Saturday & Sunday)

LEVEL-1 SPECIALIST

- Children of Trauma** (online prerequisite for Certification)
- Structured Sensory Interventions** (Friday)
- After the School Crisis** (Saturday & Sunday) **OR**
- Trauma-Informed Assessment** (Saturday & Sunday)

LEVEL-2 CONSULTANT

- Trauma-Informed Assessment** (Saturday & Sunday)

LEVEL-3 SUPERVISOR

- After the School Crisis** (Saturday & Sunday) **OR**
- Trauma-Informed Assessment** (Saturday & Sunday)

ADDITIONAL REQUIRED ONLINE COURSES AND EXAMS

TLC online course(s)

Go to www.starrtraining.org/online-courses for complete list of online courses. Write the online courses you wish to register for on the lines below.

Online Essay Exam (check one)

- Level-1 Level-2 Level-3

*If you have already obtained your Certification you can complete the new TLC Trauma-Informed Assessment Specialist Certification by attending the 2-day *Trauma-Informed Assessment* course in San Antonio, completing the TLC on-line course, *Assessment Driven Intervention*, and the online *Assessment Exam*.

Additional Information

Training will be held at the Holiday Inn Select San Antonio International Airport Hotel, 77 NE Loop 410. Call the hotel at 210-349-9900 before 2/4/12 for a special TLC room rate of \$105 plus tax. Free shuttle to and from the airport. Breakfast snack and buffet lunch is included. **We cannot accommodate special dietary requirements, however you may purchase your own lunch at the hotel restaurant.** We will email your confirmation of registration, additional training information and online course information, if applicable.

Registration Rates – Register Early to Save \$\$

TLC Members

\$125/day before 2/4	x ___ days =	\$ _____ amt due
\$140/day after 2/4	x ___ days =	\$ _____ amt due
\$100/ea Online Course	x ___ courses =	\$ _____ amt due
\$175/ea Online Exam	x ___ exam =	\$ _____ amt due

General Admission

\$140/day before 2/4	x ___ days =	\$ _____ amt due
\$165/day after 2/4	x ___ days =	\$ _____ amt due
\$100/ea Online Course	x ___ courses =	\$ _____ amt due
\$175/ea Online Exam	x ___ exam =	\$ _____ amt due

Students

\$ 95/day*	x ___ days =	\$ _____ amt due
\$100/ea Online Course	x ___ courses =	\$ _____ amt due
\$175/ea Online Exam	x ___ exam =	\$ _____ amt due

*Students must include a copy of I.D. or current schedule of classes with this registration

Payment Information

Registration Total \$ _____

CEs**

(\$25/day, \$50/2-days or \$60/3-days) \$ _____

TOTAL AMOUNT DUE \$ _____

- Check enclosed (payable to TLC) Purchase order enclosed
 Charge to: MC Visa American Express Discover

Credit Card Number _____ Expiration Date _____

Name on Credit Card _____ 3-digit Security Code _____

No CE refund for non-attendance. A \$100 fee will be charged for cancellations after 2/11/12.

Registrant Information

Registrant Name _____

Registrant Home Address _____

City _____ State _____ Zip _____

Daytime Phone _____

Email _____

School/Organization _____

School/Organization Address _____

Mail TLC, 42855 Garfield Road, Suite 111
Clinton Township, MI 48038
Online www.starrtraining.org/register
Fax 586.263.4915
Phone 877.306.5256



**THE NATIONAL INSTITUTE
FOR TRAUMA AND LOSS
IN CHILDREN**



42855 Garfield Road, Suite 111, Clinton Township, MI 48038
877.306.5256 FX 586.263.4915

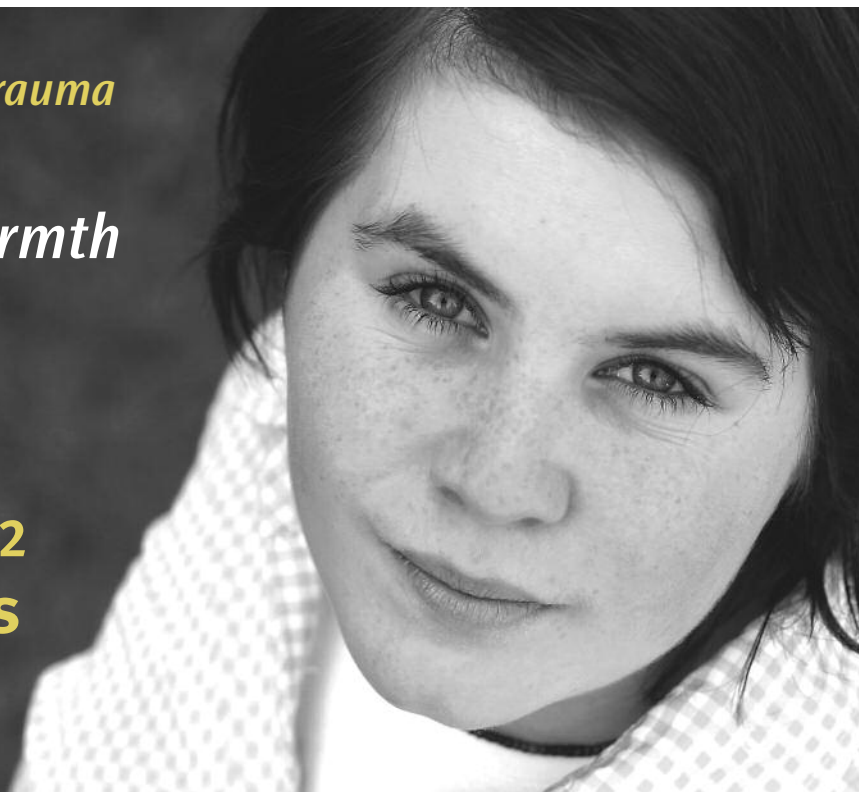
REGISTER NOW



877-306-5256
starrtraining.org/register

*Helping her overcome her trauma
will require your
expertise, time & warmth*

**TRAUMA TRAINING
& CERTIFICATION
FEBRUARY 24-26, 2012
SAN ANTONIO, TEXAS**



www.starrtraining.org/tlc

