

CASE STUDY



**ELZINGA
&
VOLKERS**

CONSTRUCTION PROFESSIONALS

Spectrum Health – Butterworth Hospital Inpatient Oncology Unit

Grand Rapids, MI

Project Team

Owner: Spectrum Health Hospitals

Design Team: URS

Project Details

Acute Care Renovation

16,000 Square feet of renovation on one floor

Completed spring of 2009



Unique Challenges	Solutions
Adjacent Patient Spaces	Constant communication and daily activity reporting was used to coordinate construction activities with an occupied patient floor below and above the construction site.
Accelerated Schedule	Detailed work planning and communication with local building officials allowed for completion of the project in just over 5 months

Project Overview

After the completion of the new Lemmon Holton Cancer Pavilion, Spectrum Health set out to upgrade their inpatient oncology unit in the adjacent Butterworth Hospital. The new unit would boast 30 private patient rooms with private bathrooms, enhanced aesthetics, matching the cancer pavilion and a future (8) bed bone marrow transplant suite.

As the largest hospital on the west side of Michigan, renovations in the busy facility requires careful planning and execution. From the beginning, Elzinga & Volkers worked to open the lines of communication with the nursing staff that worked in and around the fifth floor. This early communication proved vital to the ultimate success of the renovation.

The entire 15,000 SF floor of the bed tower was stripped to the concrete structure. To accommodate the new private patient bathrooms, sanitary rough in started right away on the 4th floor below. Elzinga & Volkers, in conjunction with all of its subcontract partners, devised a work plan which kept a steady progress work on the 4th floor moving in conjunction with wall framing on the 5th floor, all without negative impact on census. These work plans were also used by Elzinga & Volkers to negotiate weekly rough in inspections with the local building officials, which were critical to keeping the project on schedule.

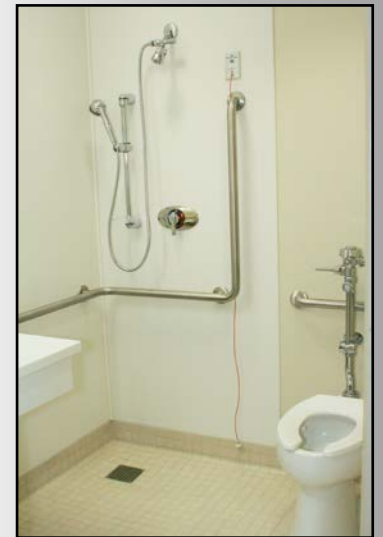
The 4th and 6th floors of the bed tower were fully occupied during construction. Elzinga & Volkers used daily construction reports to communicate construction activity to the staff on each of these units. If the construction team needed to make noise in a certain part of the construction area, this area was marked on the

report and a time of day was agreed upon for the activity to occur. Patients and their visitors were then warned ahead of time of the noise and their overall comfort was monitored. Activities that were particularly disruptive were only allowed for short periods of time each day, limiting the discomfort to patients and staff.

The new inpatient oncology unit also included many updated finishes that matched the newly constructed Lemmon Holton Cancer Pavilion. Etched glass was used extensively throughout the unit to create a clean, modern look. Patient rooms are organized around the exterior of the floor to capture natural light and the addition of glass transoms at all patient room doors allowed for this natural light to penetrate into the core staff areas located in the center of the space. Other unique features include backlit resin wall panels, stacked stone accent walls and stone planters in patient respite areas.

Eight rooms on the unit were designed and built as a future bone marrow transplant recovery area. Bone marrow transplant patients are highly susceptible to infection, so these rooms received special finishes that could easily be cleaned and maintained. The rooms were also prepped for future air quality monitoring and outfitted with sealed acoustical ceilings and doors.

The new inpatient oncology unit at Butterworth Hospital helps support the advanced cancer fighting program at Spectrum Health. Elzinga & Volkers is proud to provide its services in support of this mission.



**ELZINGA
&
VOLKERS**

CONSTRUCTION PROFESSIONALS

86 East Sixth Street
Holland, MI 49423
Office: 616.392.2383
Fax: 616.392.3752
www.elzinga-volkers.com