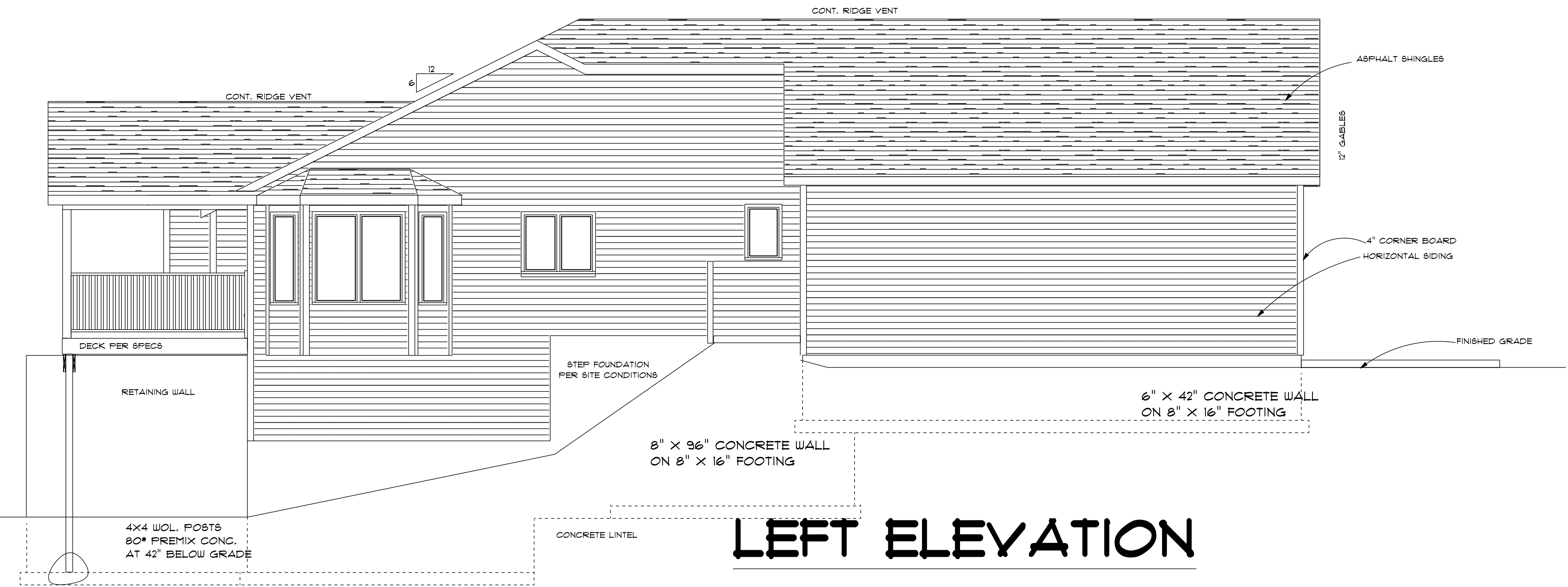


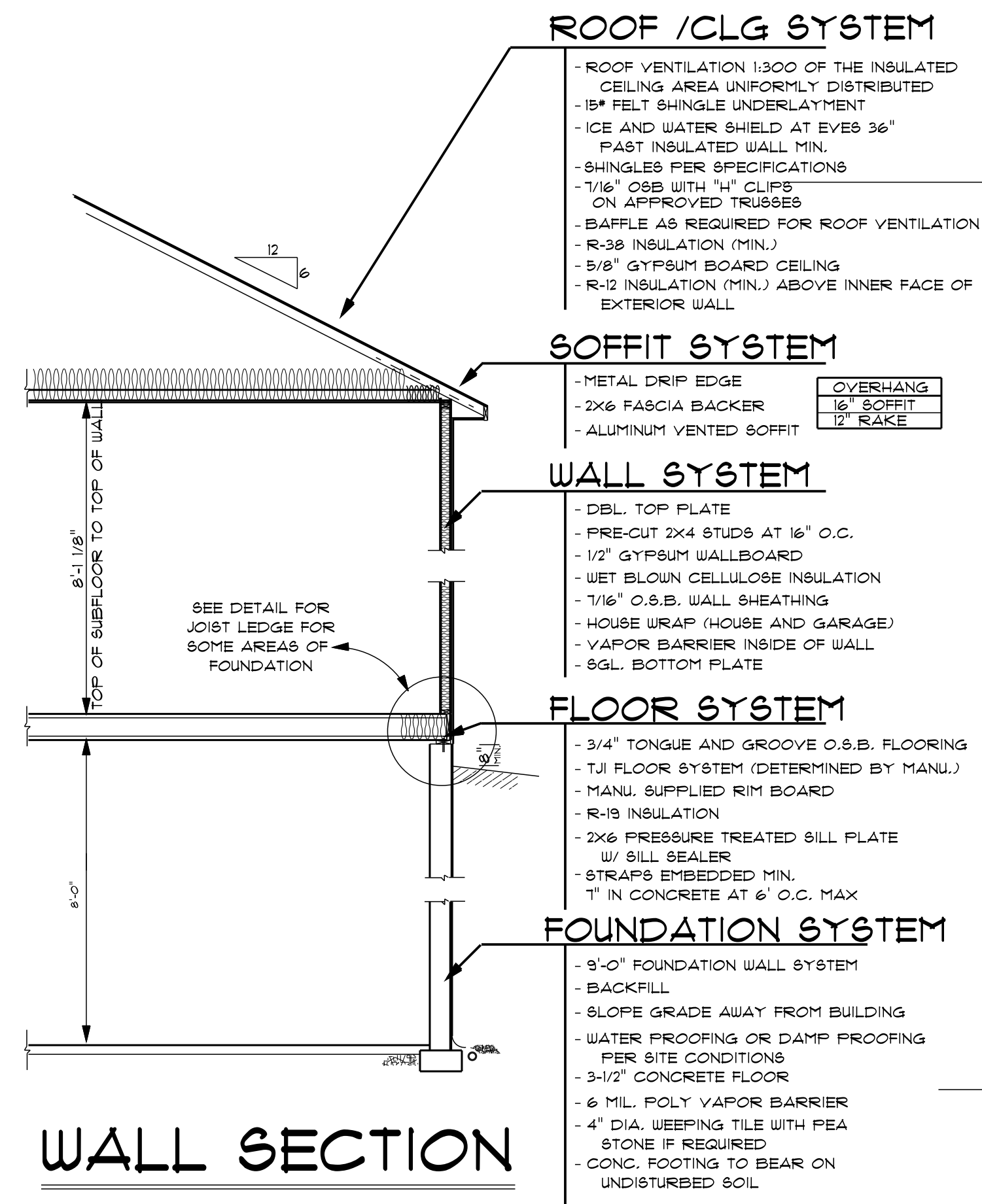
STAIR SECTION

NOT TO SCALE



LEFT ELEVATION

1/4"=1'0"



WALL SECTION

NOT TO SCALE

ROOF / CLG SYSTEM

- ROOF VENTILATION 1:300 OF THE INSULATED CEILING AREA UNIFORMLY DISTRIBUTED
- 15# FELT SHINGLE UNDERLAYMENT
- ICE AND WATER SHIELD AT EAVES 36" PAST INSULATED WALL MIN.
- SHINGLES PER SPECIFICATIONS
- 7/16" OSB WITH "H" CLIPS ON APPROVED TRUSSES
- BAFFLE AS REQUIRED FOR ROOF VENTILATION
- R-38 INSULATION (MIN.)
- 5/8" GYPSUM BOARD CEILING
- R-12 INSULATION (MIN.) ABOVE INNER FACE OF EXTERIOR WALL

SOFFIT SYSTEM

- METAL DRIP EDGE
- 2X6 FASCIA BACKER
- ALUMINUM VENTED SOFFIT

OVERHANG	16"
SOFFIT	12"
RAKE	12"

WALL SYSTEM

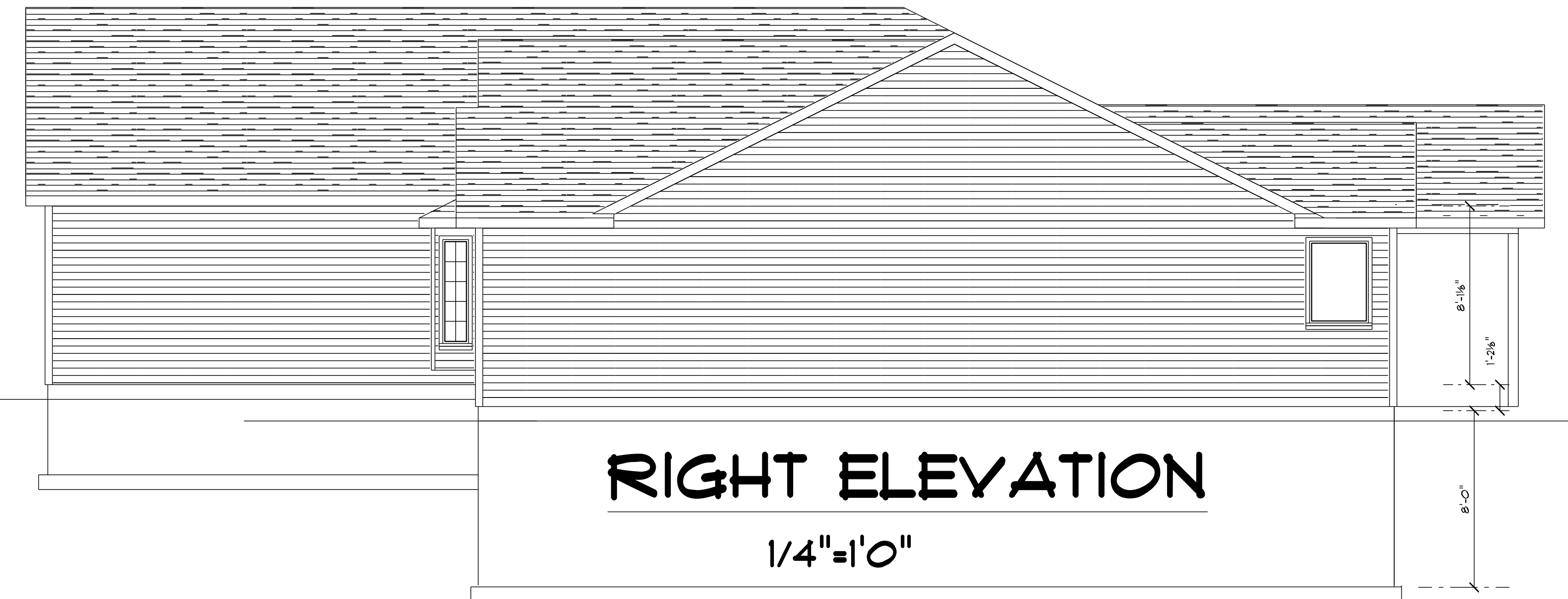
- DBL. TOP PLATE
- PRE-CUT 2X4 STUDS AT 16" O.C.
- 1/2" GYPSUM WALLBOARD
- WET BLOWN CELLULOSE INSULATION
- 7/16" O.S.B. WALL SHEATHING
- HOUSE WRAP (HOUSE AND GARAGE)
- VAPOR BARRIER INSIDE OF WALL
- SGL. BOTTOM PLATE

FLOOR SYSTEM

- 3/4" TONGUE AND GROOVE O.S.B. FLOORING
- TJI FLOOR SYSTEM (DETERMINED BY MANU.)
- MANU. SUPPLIED RIM BOARD
- R-19 INSULATION
- 2X6 PRESSURE TREATED SILL PLATE W/ SILL SEALER
- STRAPS EMBEDDED MIN. 1" IN CONCRETE AT 6" O.C. MAX

FOUNDATION SYSTEM

- 9'-0" FOUNDATION WALL SYSTEM
- BACKFILL
- SLOPE GRADE AWAY FROM BUILDING
- WATER PROOFING OR DAMP PROOFING PER SITE CONDITIONS
- 3-1/2" CONCRETE FLOOR
- 6 MIL. POLY VAPOR BARRIER
- 4" DIA. WEIRING TILE WITH PEA STONE IF REQUIRED
- CONC. FOOTING TO BEAR ON UNDISTURBED SOIL



RIGHT ELEVATION

1/4"=1'0"